



Athletics Canada/Run Canada
Measurement Certificate

Name of the course Commissioners St. 300 m Cal. Course Distance 300 m
Location (city) West Zorra Township (province) Ontario
Type of course: road race calibration track Configuration: Point to Point
Type of surface: paved dirt _____ gravel _____ grass _____ track _____
Elevation (meters above sea level) 325 m
Straight line distance between start & finish 300 m Drop 0 m/km Separation 100 %
Measured by (name, address, phone & e-mail) Bernard Conway and Mary Conway
67 Southwood Crescent, London, Ontario, N6J 1S8 519-641-6889
Contact (name, address & phone) _____

Measuring Methods: steel tape electronic distance meter
Number of measurements of entire course: two Date(s) when course measured: April 12/2012
Course paperwork submission date: April 19/2012
Replaces: _____ (if applicable) Certification code: _____

ON-2012-016-BDC

Be It Officially Noted That

Based on examination of data provided by the above named measurer, the course described above and in the map attached is hereby certified as reasonably accurate in measurement according to the standards adopted by the Road Running Technical Council. If **any** changes are made to the course, this certification becomes void, and the course must then be recertified.

Validation of Course — In the event a National Open Record is set on this course, or at the discretion of Athletics Canada/Run Canada, a validation remeasurement may be required to be performed by a qualified measurer. If such a remeasurement shows the course to be short, then all pending records will be rejected and the course certification will be cancelled.

AS NATIONALLY CERTIFIED BY:

Bernard Conway Date: April 19/2012
Bernard Conway - Athletics Canada/Run Canada National Certifier

- IAAF/AIMS Grade A Measurer
- USATF/RRTC Final Signatory

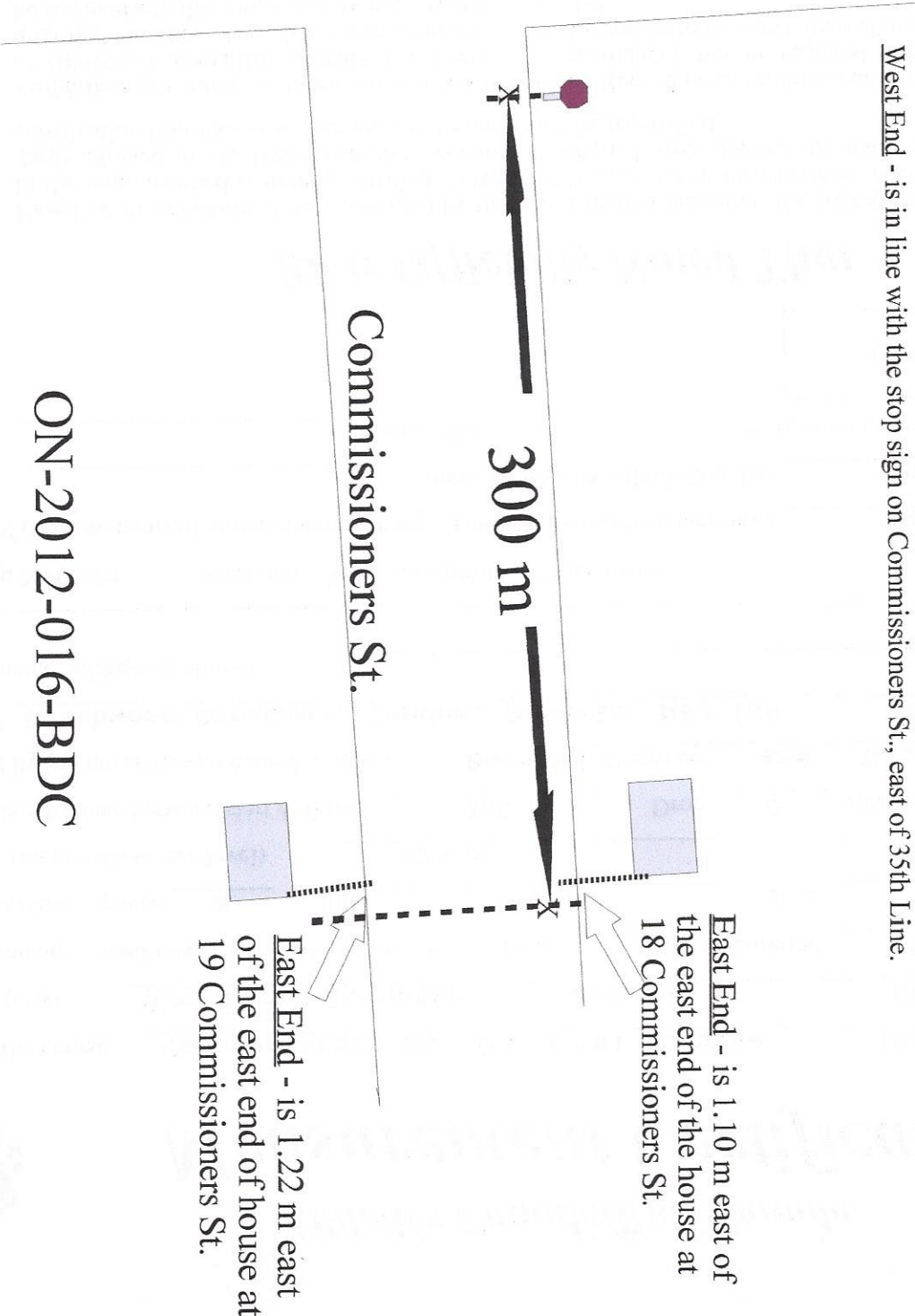
67 Southwood Crescent, London, Ontario, Canada, N6J 1S8
Phone: 519-641-6889 (H) Fax: 519-641-6889 E-mail: measurer@rogers.com

Commissioners St. 300 m Calibration Course



35th Line

West End - is in line with the stop sign on Commissioners St., east of 35th Line.



East End - is 1.10 m east of the east end of the house at 18 Commissioners St.

East End - is 1.22 m east of the east end of house at 19 Commissioners St.

ON-2012-016-BDC