



*Athletics Canada/Run Canada*  
**Measurement Certificate**

Name of the course 14 Av. SE 300 m Calibration Course Distance 300 m  
Location (city) Calgary (province) Alberta  
Type of course: road race calibration  track Configuration: Point to Point  
Type of surface: paved  dirt \_\_\_\_\_ gravel \_\_\_\_\_ grass \_\_\_\_\_ track \_\_\_\_\_  
Elevation (meters above sea level) 1045 m  
Straight line distance between start & finish 300 m Drop 0 m/km Separation 100 %  
Measured by (name, address, phone & e-mail) Marcel LaMontagne 1827 Bay Shore Rd. SW  
Calgary, AB and Bill Wylie  
Contact (name, address & phone) \_\_\_\_\_

Measuring Methods: steel tape  electronic distance meter  
Number of measurements of entire course: two Date(s) when course measured: March 31/2012  
Course paperwork submission date: April 7/2012  
Replaces: \_\_\_\_\_ (if applicable) Certification code: \_\_\_\_\_

**AB-2012-014-BDC**

***Be It Officially Noted That***

Based on examination of data provided by the above named measurer, the course described above and in the map attached is hereby certified as reasonably accurate in measurement according to the standards adopted by the Road Running Technical Council. If *any* changes are made to the course, this certification becomes void, and the course must then be recertified.

**Validation of Course** — In the event a National Open Record is set on this course, or at the discretion of Athletics Canada/Run Canada, a validation remeasurement may be required to be performed by a qualified measurer. If such a remeasurement shows the course to be short, then all pending records will be rejected and the course certification will be cancelled.

***AS NATIONALLY CERTIFIED BY:***

*Bernard Conway*

Date: April 11/2012

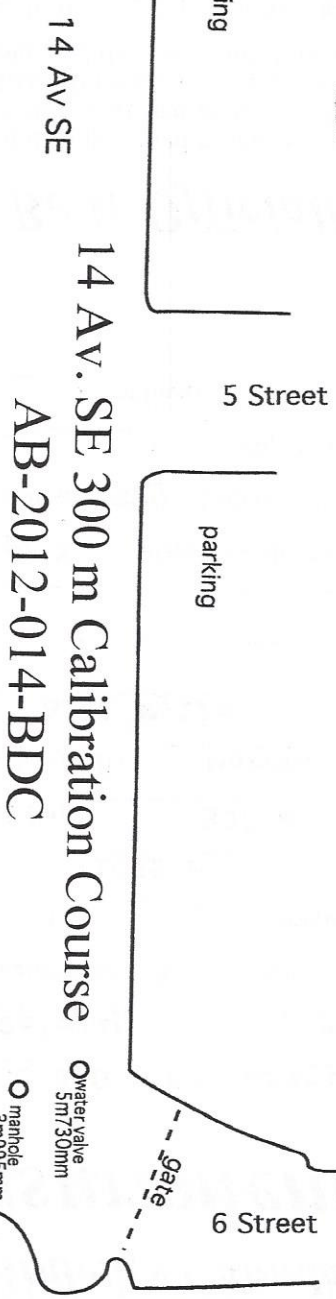
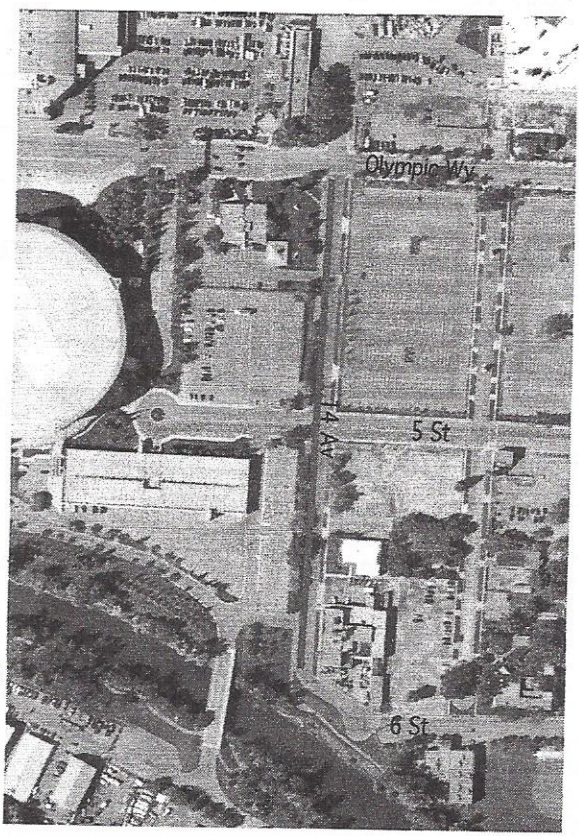
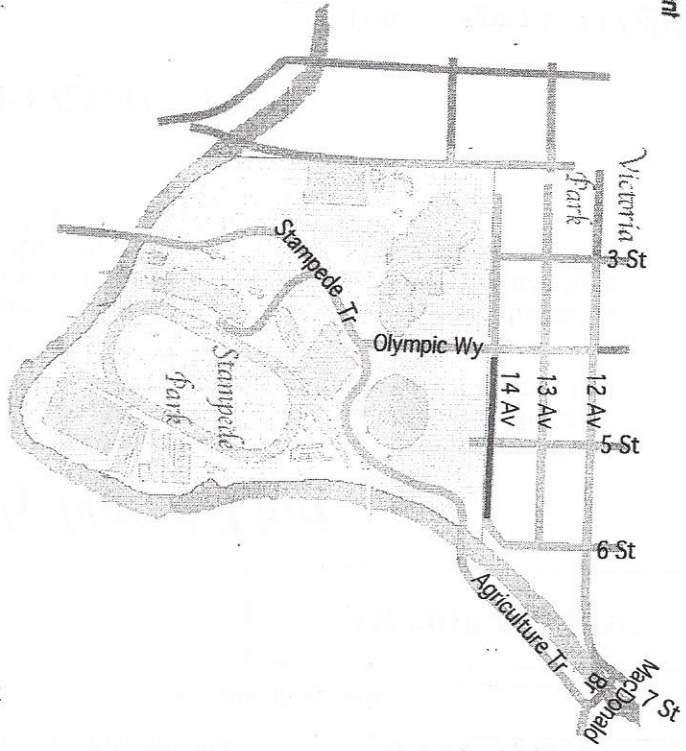
Bernard Conway - Athletics Canada/Run Canada National Certifier

- IAAF/AIMS Grade A Measurer
- USATF/RRTC Final Signatory

67 Southwood Crescent, London, Ontario, Canada, N6J 1S8

Phone: 519-641-6889 (H) Fax: 519-641-6889 E-mail: [measurer@rogers.com](mailto:measurer@rogers.com)

Stampede Park Calibration Course



14 Av. SE 300 m Calibration Course  
AB-2012-014-BDC

manhole 18m495mm  
water valve 9m485mm  
51 02 21.1  
114 03 12.3  
1047m

300.000m

51 02 20.6  
114 02 58.9  
1045m

Reference Measurements  
(from west end point)

(south) fire hydrant 13m790mm  
(north/west) water valve 9m485mm  
(west) manhole 18m495mm

end points located with mag nail,  
painted, GPS referenced, photo taken  
and measured to 3 permanent objects

Course Measured by:

Marcel LaMontagne 403-874-1185  
Bill Wylie 403-542-8010  
March 31, 2012

Reference Measurements  
(from east end point)

(south) surface gutter 0m660mm  
(north/east) manhole 3m995mm  
(north) water valve 5m730mm

end points located with mag nail,  
painted, GPS referenced, photo taken  
and measured to 3 permanent objects